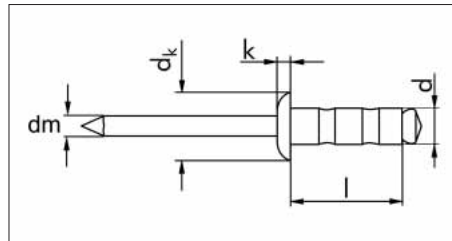


BLIND RIVET

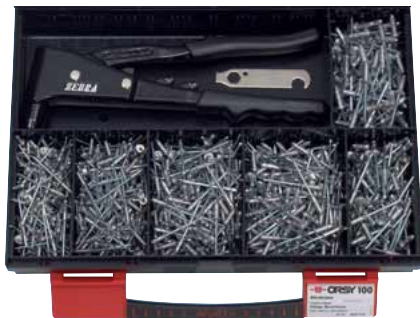


Suitable for ORSY®



d x l in mm	Drilling hole dia. in mm	Clamping range in mm	dk in mm	k in mm	dm in mm	Shear fract. load N	Tens. fract. load N	Art. No.	P. Qty.
3.2 x 8	3.3 - 3.5	0.5 - 4.8	6.4	1.1	1.8	750	1,000	0915 532 8	500
3.2 x 11	3.3 - 3.5	4.0 - 8.0	6.4	1.1	1.8	750	1,000	0915 532 11	500
4.0 x 10	4.1 - 4.3	1.2 - 6.3	8.0	1.4	2.2	1,200	1,600	0915 540 10	500
4.0 x 13	4.1 - 4.3	4.0 - 9.6	8.0	1.4	2.2	1,200	1,600	0915 540 13	500
4.0 x 17	4.1 - 4.3	6.4 - 12.7	8.0	1.4	2.2	1,200	1,600	0915 540 17	250
4.8 x 10*	4.9 - 5.1	1.6 - 6.3	9.6	1.4	2.7	1,600	2,200	0915 548 10	250
4.8 x 15*	4.9 - 5.1	4.8 - 11.1	9.6	1.6	2.7	1,600	2,200	0915 548 15	250
4.8 x 25*	4.9 - 5.1	12.7 - 19.8	9.6	1.6	2.7	1,600	2,200	0915 548 25	250

* = Construction permit



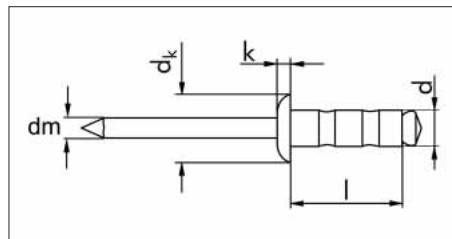
Assortment

Contents: 6 dimensions
from 3.2 x 8.0 to 4.8 x 15 = 1000 parts
+ 1 ZEBRA® Hand-Held Rivet Pliers

Art. No. 0964 915 50



Suitable for ORSY®



d x l in mm	Drilling hole dia. in mm	Clamping range in mm	dk in mm	k in mm	dm in mm	Shear fract. load N	Tens. fract. load N	Art. No.	P. Qty.
4.8 x 10*	4.9 - 5.1	1.6 - 6.3	9.6	1.6	2.7	1600	2400	0915 884 810	250
4.8 x 15*	4.9 - 5.1	4.8 - 11.1	9.6	1.6	2.7	1600	2400	0915 884 815	250
4.8 x 25*	4.9 - 5.1	12.7 - 19.8	9.6	1.6	2.7	1600	2400	0915 884 825	250

* = Construction permit

Round pan head

Sleeve: Aluminum AIMg 2.5

**Pin: Galvanized steel,
blue passivated (A2K)**

Mid-strength riveting range

**Properties
of the ZEBRA® Blind Rivet:**

1. High quality of the rivet connection.

- Clean, secure closing.
- Flexible patented rivet pin locking mechanism.
- Consistently high tensile and shear strengths.
- High-strength rivet connections, impact-proof and protected against splash water.
- Great shaft expansion.
- Maximum borehole filling, even in case of overdrilled boreholes.

2. Type limitation due to large clamping length range

- Reduction of the type variety in warehousing.
- Less sources for defects in processing.

Round pan head

Sleeve: Aluminum AIMg 2.5

Pin: Stainless steel A2

Mid-strength riveting range